

Planed wood

Moulded boards

Spruce round 19/146



Lenght in m	Number of pieces per package
4.00	252
4.50	252
5.00	252

Moulded boards

Spruce chamfer 19/146



Lenght in m	Number of pieces per package
4.00	252
4.50	252
5.00	252

Moulded boards

Spruce chamfer 22/146



Lenght in m	Number of pieces per package
5.10	252

Moulded boards

Spruce chamfer 27/146




Lenght in m	Number of pieces per package
5.10	210

S4S

Spruce 5.00 m



Size 21	Size 27
21/95	27/145
21/120	27/195
21/145	
21/170	
21/195	
21/220	

 Express programme – available at short notice

 available to order



Line 1

Weinig Hydromat 9 spindles
With universal axle swivelling by 360° and splitting unit;
Feed rate of up to 100 m/min.;
With de-stacking, length cutting, stacking machine and lathe magazines;
Clean, smooth surfaces through the use of jointers

Line 2

Weinig „Maxiplan“
Special machine with a planing width of 300 mm;
Clearance height of 200 mm

We plane and profile according to your requirements. The required templates and cutters are manufactured and also reground by us on a profile grinding machine.

- Fluted surfaces/floor surfaces..... Page 26
- N+F profile formwork Page 28
- Facade profile Page 32



Planed wood

Fluted surfaces / floor surfaces



Profile

1 Fluting

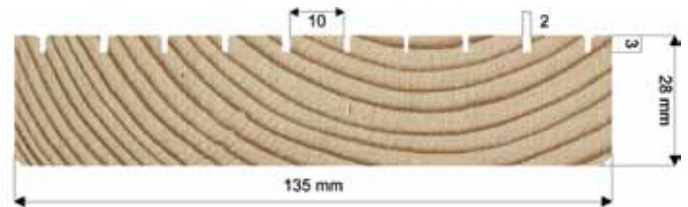
(Groove depth 1.5 mm), all varieties of wood possible
Fluting on both sides possible



Profile

2 Bridge flooring

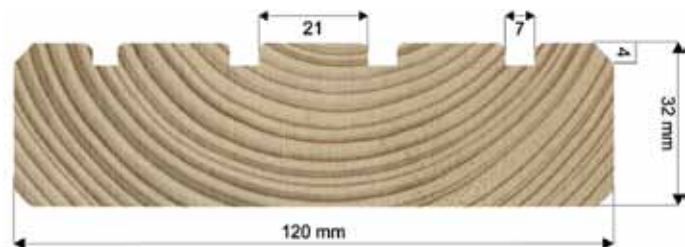
All varieties of wood possible



Profile

3 Rounded plank profile

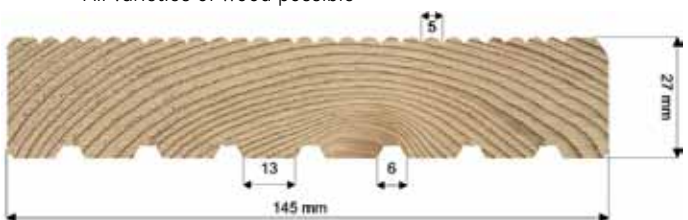
All varieties of wood possible



Profile

4 Combi-profile

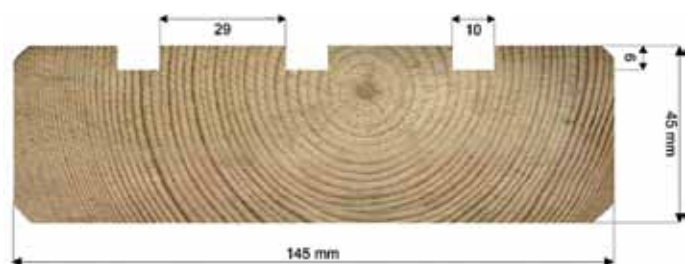
Groove depth 1.5 mm, rear side 3.0 mm
All varieties of wood possible



Profile

5 Bridge flooring

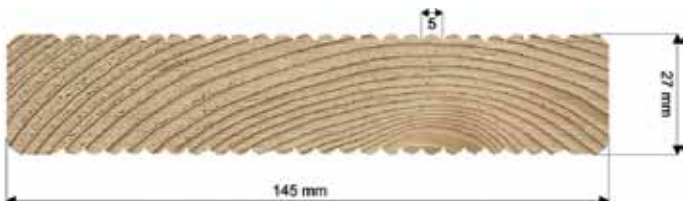
All varieties of wood possible



Profile

6 Fluting with divider (both sides)

Groove depth 1.5 mm, all varieties of wood possible



Profile

7 Decking board (rough fluting on both sides)

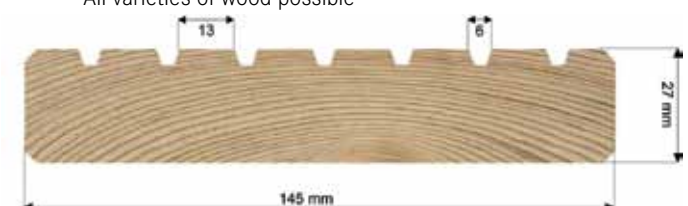
All varieties of wood possible



Profile

8 Decking board

(planed smooth on one side, rough fluting on rear side)
All varieties of wood possible



Planed wood



Fluted surfaces / floor surfaces

Profile

9

Special profile fluted with divider (with side slit)

All varieties of wood possible

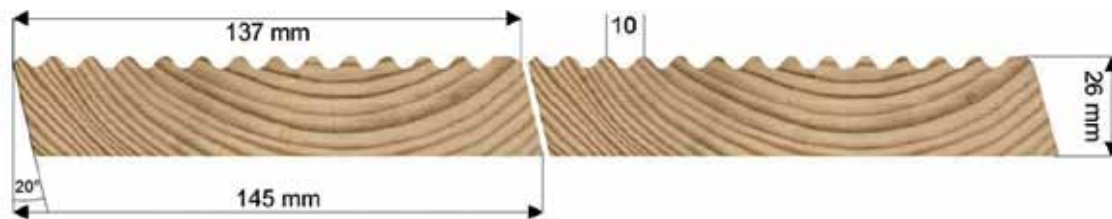


Profile

10

Special profile fluted with bevelled edge (special fluting)

All varieties of wood possible

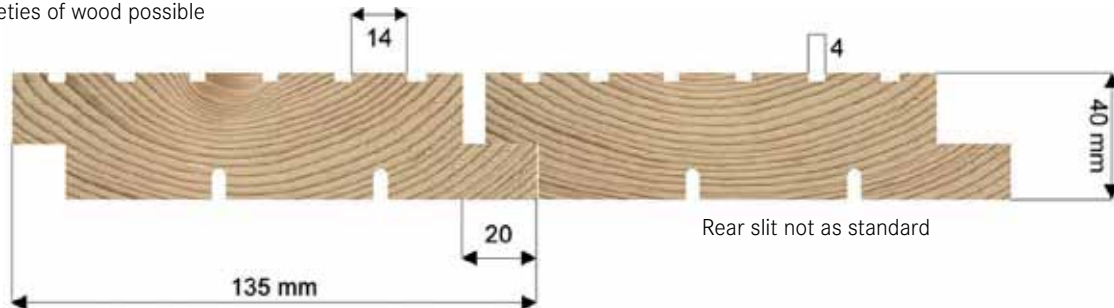


Profile

11

Crest profile with rebate joint (groove depth 3 mm/4 mm)

All varieties of wood possible



Profile

12

Sinusoidal cross-section

All varieties of wood possible



Varieties of wood fluted surfaces / floor surfaces

Spruce (Nordic)	Silver fir	Pine (Nordic)
Douglas fir	Larch (sib.)	Oak
Bankirai	IPE	Thermo ash

Planed wood



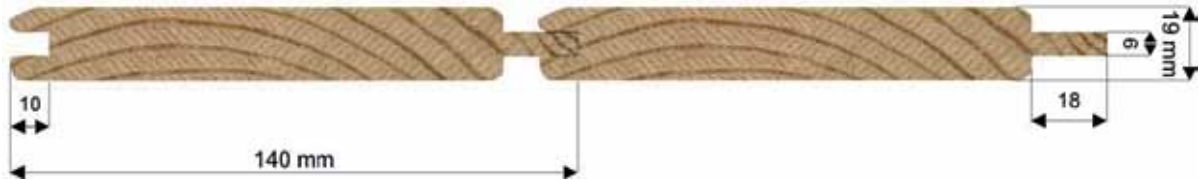
N+F profile formwork

Profile

13

N+F bevelled board with bevel on all sides

All varieties of wood possible

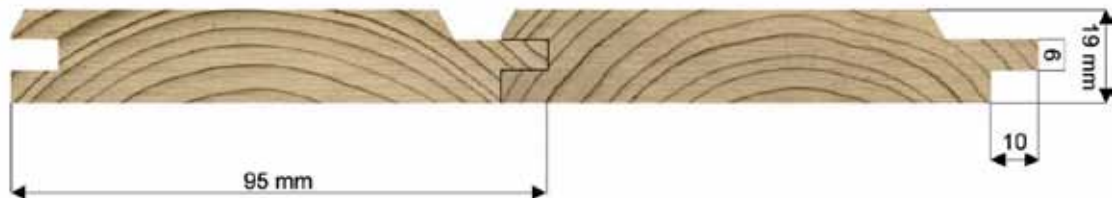


Profile

14

N+F roof board with bevel on all sides

All varieties of wood possible

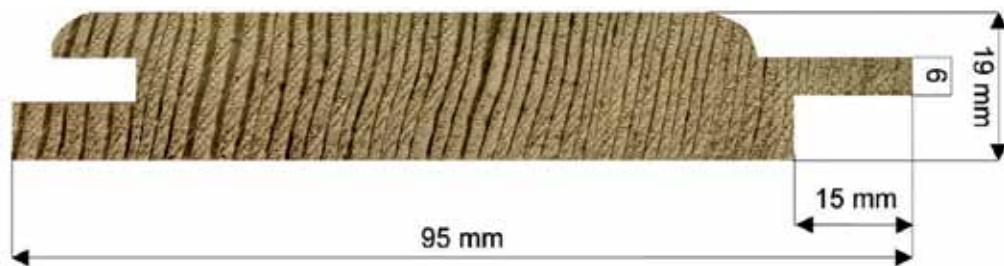


Profile

15

Softline (with covered nail points)

All varieties of wood possible

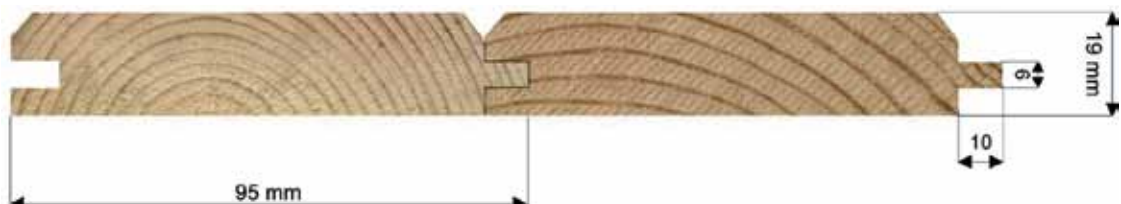


Profile

16

N+F bevelled board with bevel on two sides

All varieties of wood possible



Planed wood



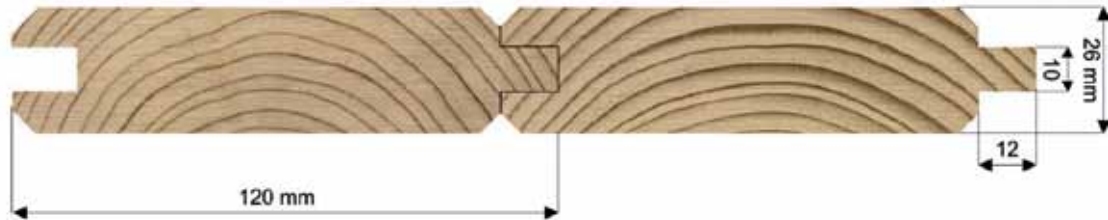
N+F profile formwork

Profile

17

N+F roof board with bevel on all sides

All varieties of wood possible

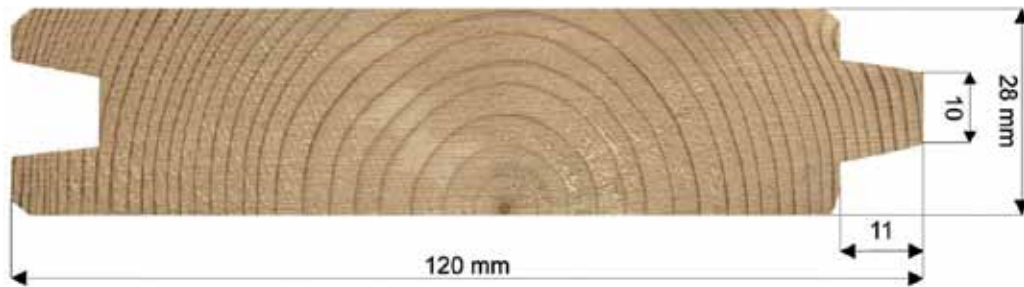


Profile

18

N+F roof board (conical; length: 3.00 – 5.40 m)

Nordic spruce only

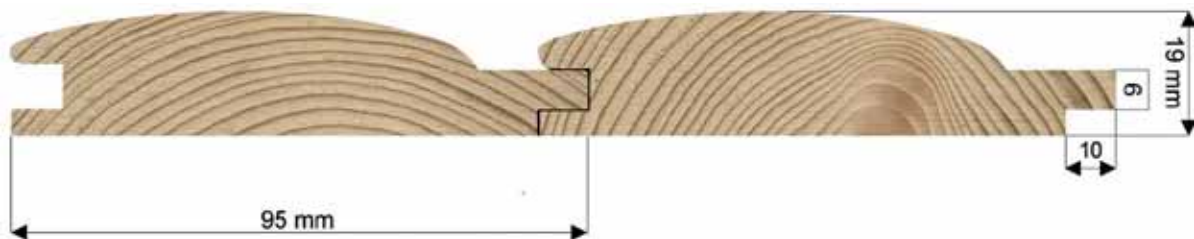


Profile

19

Log house profile

All varieties of wood possible

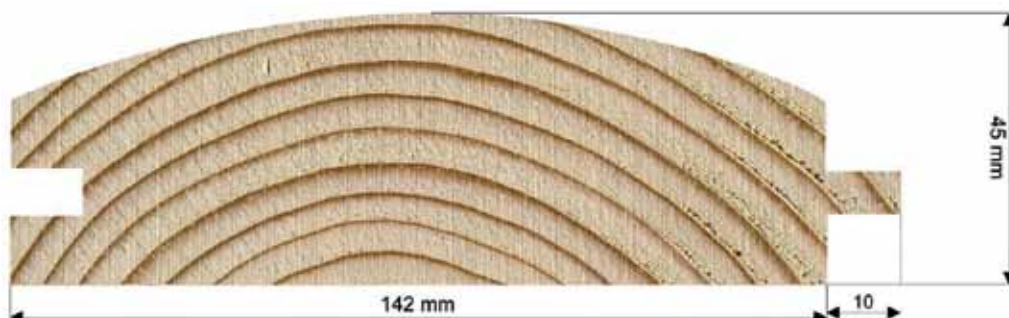


Profile

20

Rounded log house profile

All varieties of wood possible



Planed wood

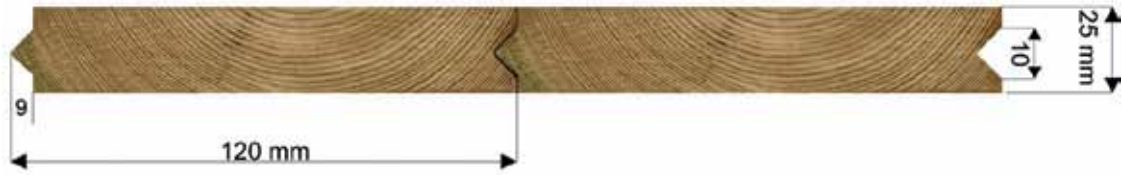


N+F profile formwork

Profile

21 Pig back formwork

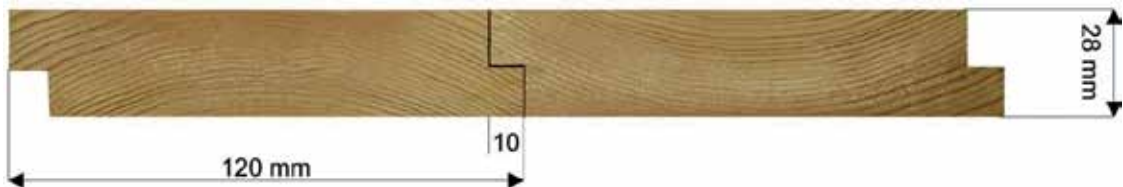
All varieties of wood possible



Profile

22 Rebate joint

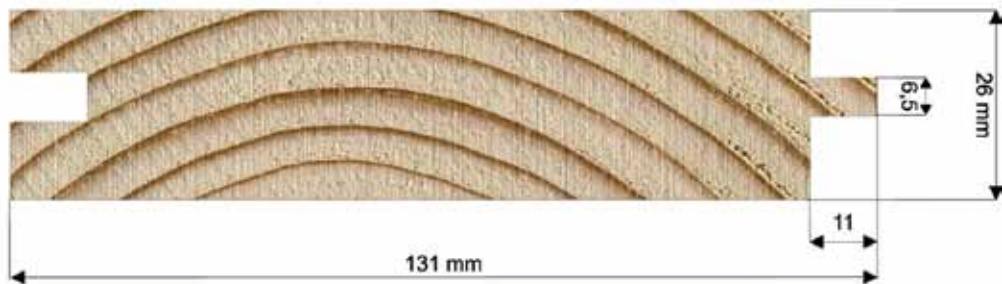
All varieties of wood possible



Profile

23 N+F bottom board

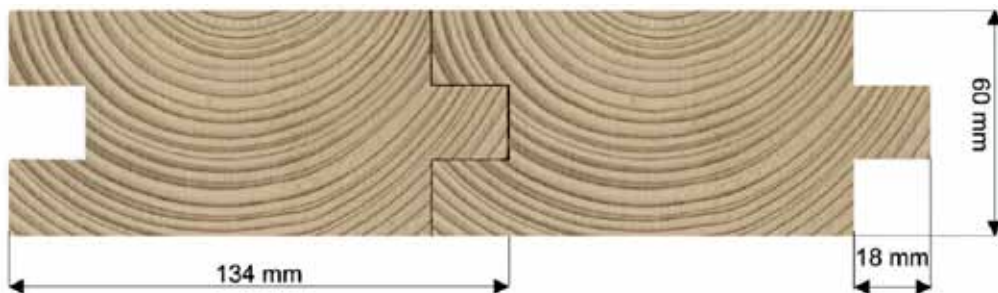
All varieties of wood possible



Profile

24 N+F planks (tongue length 18 mm)

All varieties of wood possible



Planed wood



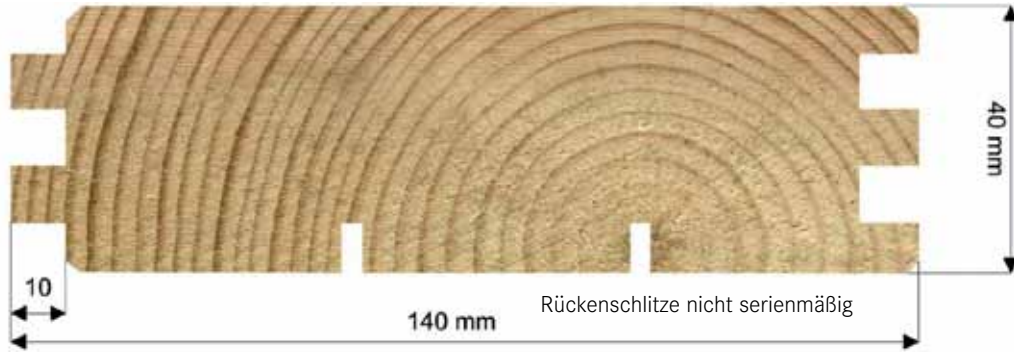
N+F profile formwork

Profile

25

Double N+F

All varieties of wood possible

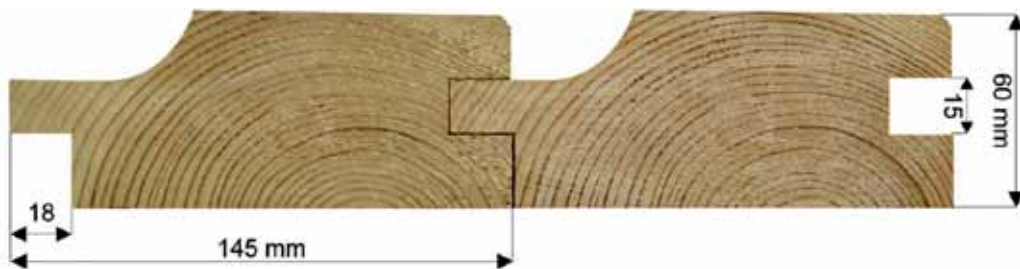


Profile

26

N+F with chamfer

All varieties of wood possible

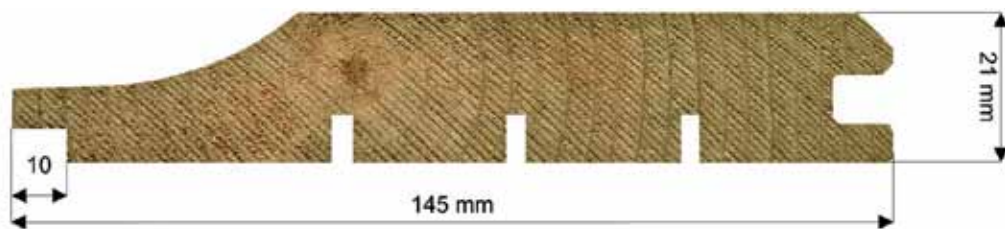


Profile

27

N+F shiplap formwork with chamfer

All varieties of wood possible



Varieties of wood N+F profile formwork

Spruce (Nordic)	Silver fir	Pine (Nordic)
Douglas fir	Larch (sib.)	

Planed wood

Facade profiles

Profile

28 Facade profile (double rhombus)



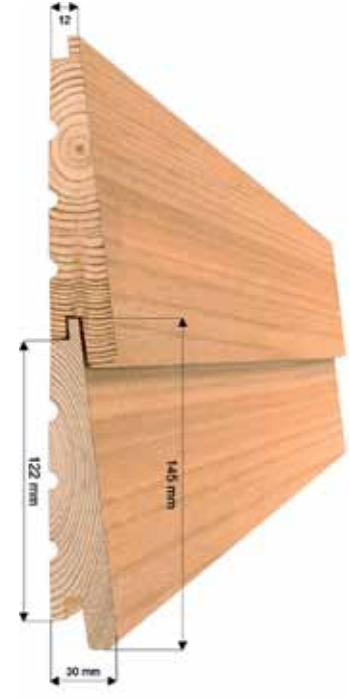
Profile

29 Wall formwork (with rebate on one side)



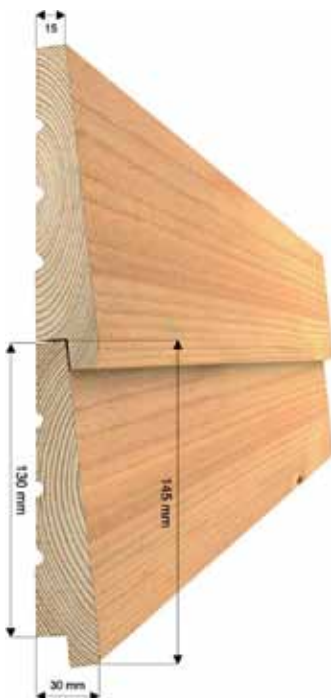
Profile

30 Inclined formwork tongue + groove (visible side rough or planed)



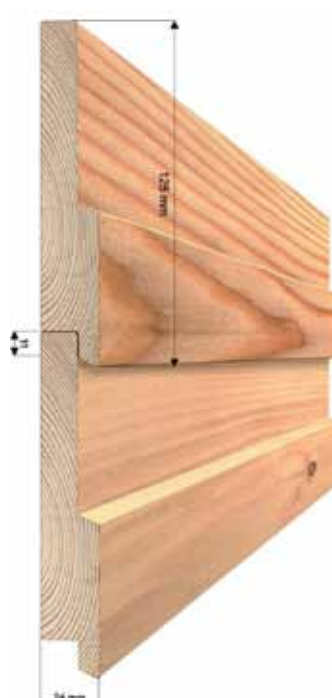
Profile

31 Inclined formwork with tongue + groove (visible side rough or planed)



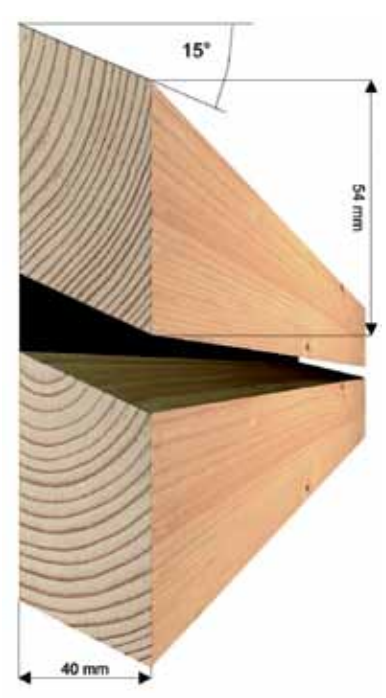
Profile

32 Facades casing profile



Profile

33 Facade frame (double rhombus), parallelogram, optionally 10°, 15°, 20° or 25°



Planed wood

Facade profiles

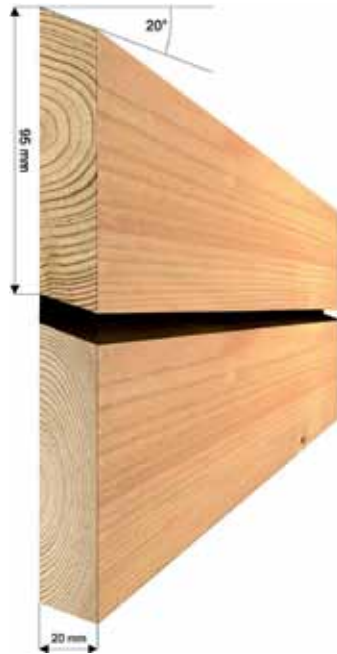
Profile

34 Rebate joint with chamfer (visible side rough or planed)



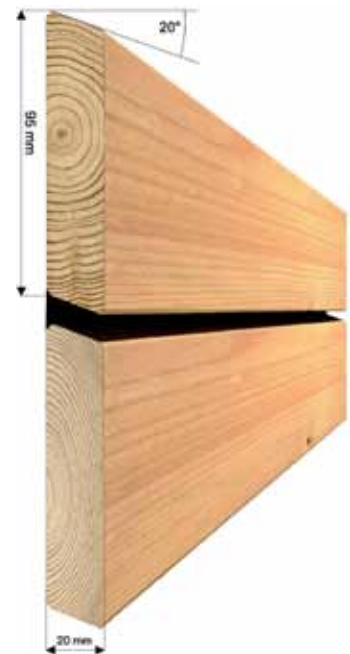
Profile

35 Facade board (Rhombus), parallelogram without bevelling, optionally 10°, 15°, 20° or 25°



Profile

36 Facade board (Rhombus) all edges lightly bevelled, optionally 10°, 15°, 20° or 25°



Profile

37 Extrusion profile (curtain-wall facade profile), 27 mm thick and 68 mm wide, varieties of wood: spruce and larch



Profile

38 Micro-fluting (possible on straight surfaces), better paint application due to enlarged surface



Varieties of wood wall profile

Spruce (Nordic)

Silver fir

Pine (Nordic)

Douglas fir

Larch (sib.)