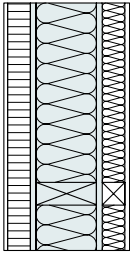
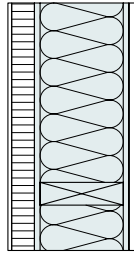


AUSSENWAND



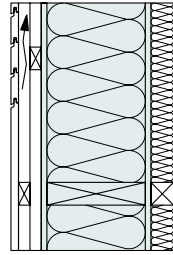
h-s_190

+ 70 mm aussen/Putzaufbau
+ 75 mm innen/Installation
U = 0.15 W/m²K



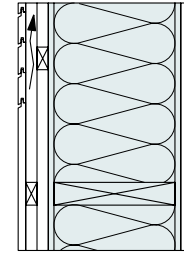
h-s_250

+ 70 mm aussen/Putzaufbau
+ 18 mm innen/Gipsplatte
U = 0.15 W/m²K



h-s_290

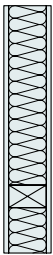
+ 80 mm aussen/hinterlüftet
+ 75 mm innen/Installation
U = 0.15 W/m²K



h-s_350

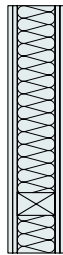
+ 80 mm aussen/hinterlüftet
+ 18 mm innen/Gipsplatte
U = 0.15 W/m²K

INNENWAND



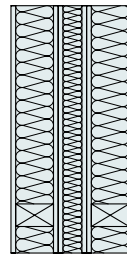
h-s_105 / _125 / _145 / _225

beidseitig Gipsfaserplatte 12.5



h-s_150 / _170 / _190

beidseitig 2 x Gipsfaserplatte 12.5

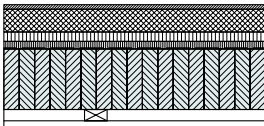


h-s_325

beidseitig Gipsfaserplatte 12.5

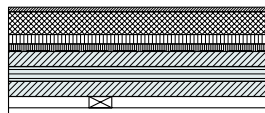
WOHNUNGSTRENNWAND

GESCHOSSDECKE



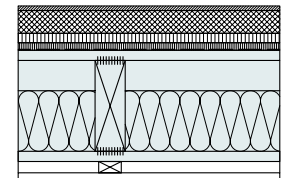
h-s_160

BSH Deckenelement
+ 117 mm oben/Bodenaufbau
+ 41 mm unten/Gipsdecke



h-s_120

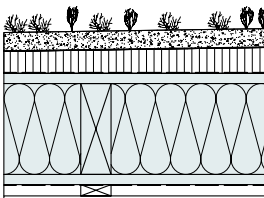
CLT Deckenelement
+ 117 mm oben/Bodenaufbau
+ 41 mm unten/Gipsdecke



h-s_294

Hohlkastenelement
+ 117 mm oben/Bodenaufbau
+ 41 mm unten/Gipsdecke

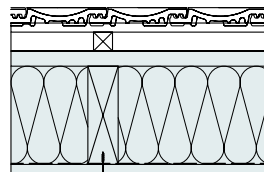
FLACHDACH



h-s_294

+ 120 mm oben/Flachdachaufbau
+ 43 mm unten/Gipsdecke
U = 0.15 W/m²K

STEILDACH



h-s_327

+ 74 mm oben/Steildachaufbau
U = 0.15 W/m²K

Die dargestellten Aufbauten sind Vorschläge zur prinzipiellen Konstruktionsweise.

Für die Konstruktionszeichnungen werden jegliche Haftungsansprüche abgelehnt.